



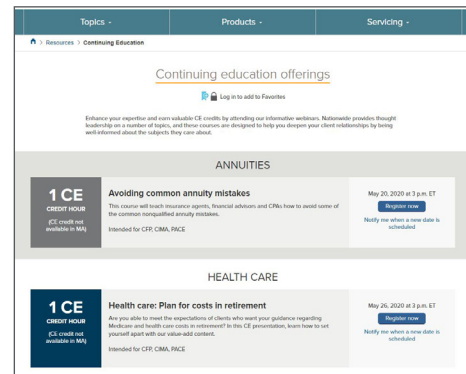
Resources

Consultative support

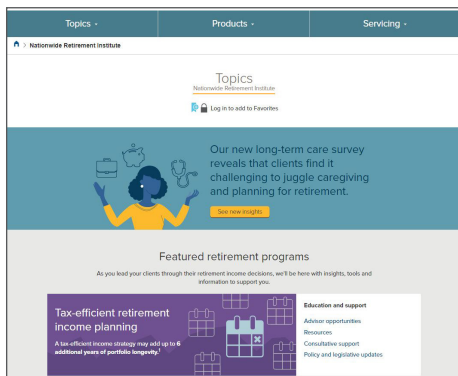
NATIONWIDE RETIREMENT INSTITUTE®

# Connect today with trusted resources

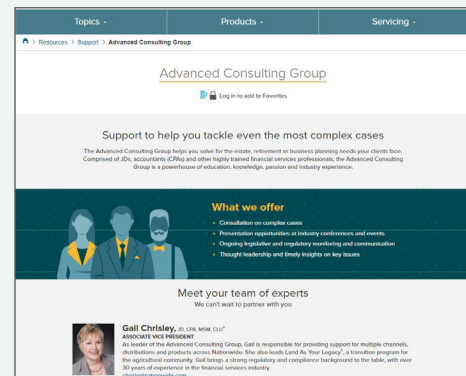
Answers to complex retirement questions from qualified specialists are a click or call away



Current continuing education (CE) courses



Nationwide Retirement Institute



The Advanced Consulting Group



For case consultation reach out to  
**The Institute Planning team at 877-245-0763 or [iplndesk@nationwide.com](mailto:iplndesk@nationwide.com)**

For questions regarding complex cases, contact  
**The Advanced Consulting Group at 614-677-6500 or [advcg@nationwide.com](mailto:advcg@nationwide.com)**



To learn more, contact the National Sales Desk at **1-800-321-6064**.



**Nationwide®**  
is on your side

This material is not a recommendation to buy, sell, hold or roll over any asset, adopt an investment strategy, retain a specific investment manager or use a particular account type. It does not take into account the specific investment objectives, tax and financial condition or particular needs of any specific person. Investors should discuss their specific situation with their financial professional.

The general distributor is Nationwide Investment Services Corporation (NISC), member FINRA, Columbus, Ohio. The Nationwide Retirement Institute is a division of NISC.

Nationwide, the Nationwide N and Eagle, Nationwide is on your side and Nationwide Retirement Institute are service marks of Nationwide Mutual Insurance Company. © 2020 Nationwide

NFM-19577AO (05/20)